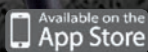


PosiTector[®] *SHD*

Shore Hardness Durometer



Measures the hardness of non-metallic materials. Two models are available – Shore A and Shore D



DeFelsko[®]
The Measure of Quality

PosiTector[®]SHD Shore Hardness Durometer

All Gages Feature...

Simple

- Easy-to-read digital display
- User-adjustable measurement time with on-screen countdown to conform to national and international standards
- **NEW** Larger 2.8" impact resistant color touchscreen with redesigned keypad for quick menu navigation
- **NEW** On-gage help explains menu items at the touch of a button
- RESET feature instantly restores factory settings

Durable

- **NEW** Weatherproof, dustproof, and water-resistant—IP65-rated enclosure
- **NEW** Ergonomic design with durable rubberized grip
- Shock-absorbing protective rubber holster for added impact resistance
- Two year warranty on body AND probe

Accurate

- Certificate of Calibration showing traceability to NIST included
- Auto Ignore mode disregards readings below 20 and above 90 per international standards
- Hi-RES mode increases displayed resolution for precision applications
- Includes test block to verify operation
- Conforms to national and international standards including ISO and ASTM

Versatile

- PosiTector body accepts all PosiTector SHD, BHI, 6000, 200, DPM, IRT, RTR, SPG, SST, and UTG probes easily converting from a hardness tester to a coating thickness gage, dew point meter, surface profile gage, soluble salt tester, or ultrasonic wall thickness gage
- Selectable display languages
- **NEW** Auto rotating display with Flip Lock

Powerful

- Continually displays/updates average, standard deviation, min/max and number of readings while measuring
- **NEW** Screen Capture—save 100 screen images for record keeping and review
- HiLo alarm audibly and visibly alerts when measurements exceed user-specified limits
- **NEW** Instant-on feature quickly powers up the gage if recently powered down
- USB port for fast, simple connection to a PC and to supply continuous power. USB cable included.
- PosiSoft USB Drive—stored readings and graphs can be accessed using universal PC/Mac web browsers or file explorers. No software required.
- Every stored measurement is date and time stamped
- Includes PosiSoft suite of software for viewing and reporting data

Select from two measurement ranges

Probes	Shore A	Shore D
Typical Applications	Soft to hard materials such as soft rubber, elastomers, neoprene, silicone, etc.	Medium to extra hard materials such as hard rubber, epoxies, hard plastics, PVC, acrylic, etc.
Range	0 – 100	
Accuracy	± 1	
Resolution	0.1	

Standard Models

Includes ALL features as shown on left plus...

- **NEW** Storage of 1,000 readings per probe—stored readings can be viewed or downloaded

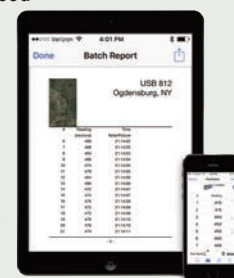
Advanced Models

Includes ALL features as shown on left plus...

- **NEW** Storage of 250,000 readings from multiple probes in up to 1,000 batches and sub-batches
- Auto Sub-Batch—automatically create sub-batches after the required number of readings are taken
- Live graphing of measurement data
- **NEW** Touchscreen keyboard for quickly renaming batches, adding notes, and more
- WiFi technology wirelessly synchronizes with PosiSoft.net and downloads software updates
- **Bluetooth® 4.0 Technology** for data transfer to a mobile device running the PosiTector App or optional portable printer. **BLE API** available for integration into third-party software.
- Store thickness, profile, environmental, salt contamination, hardness, and wall thickness measurements in individual batches

PosiTector App

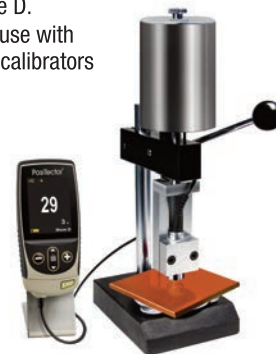
- Mobile app connects PosiTector Advanced instruments to your *iOS* or *Android* smart device
- Auto-pairing *Bluetooth BLE* connection
- Easily create custom reports from your measurement data in seconds
- Export readings to PosiSoft Desktop or synchronize readings with PosiSoft.net for further reporting and archival options
- For a complete list of features visit www.defelsko.com/PosiSoft



Accessories

- **Test Blocks** for Shore A or Shore D. Ideal for checking the operation of durometers.
- **Durometer Test Stands** facilitate consistent probe placement. Two models available—Shore A or Shore D.
- **PosiTector SHD Universal Adaptor** for use with threaded mounts in other test stands or calibrators

The PosiTector SHD Shore Hardness Durometer can be used as a handheld instrument or placed in a test stand to reduce operator influence.



All Gages Come Complete with test block, protective rubber holster, wrist strap, 3 AAA alkaline batteries, instructions, nylon carrying case with shoulder strap, Long Form Certificate of Calibration traceable to NIST, protective lens shield, USB cable, PosiSoft Software, two (2) year warranty.

***Size:** 127 x 66 x 25.4 mm (5" x 2.6" x 1")

***Weight:** 137 g (4.9 oz.) without batteries

** Size and weight are for the PosiTector gage body only and do not include the probe.*

Conforms to ASTM D2240, ISO 868/7267/7619 and DIN 53505

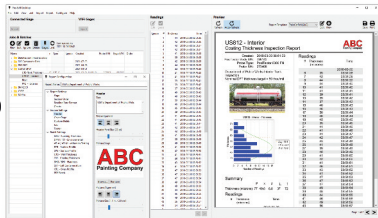
PosiSoft® Suite of Software

Powerful ways to view and report your PosiTector and PosiTest data

PosiSoft Desktop — PC/Mac

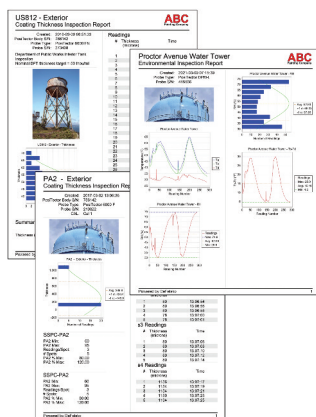
Powerful desktop software for downloading, archiving, and reporting measurement data.

- Import readings directly from the gage via USB, WiFi, or legacy PosiSoft Desktop versions
- **Jobs feature** consolidates batches into groups to keep measurement data organized and to quickly create multi-batch reports
- Fully integrates with PosiSoft.net—backup and synchronize jobs, batches, readings, and report templates to the cloud (see inset at right)
- Export readings as .csv (comma separated value) files for easy import into Excel and other spreadsheets



Professional, Custom Reports

- Compile single or multi-batch reports from multiple probes and instrument types
- Add pictures, screen captures, notes, and more with an onscreen live preview
- Instantly create professional reports from pre-formatted report templates
- Design custom layouts and templates—add custom cover pages and logos, and choose to display charts, histograms, and/or individual readings
- Drag-and-drop Custom Fields mode—import PDF forms and overlay fields to automatically populate inspection data



Prompted Batch Mode

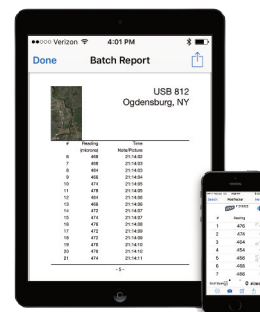
Create pre-defined batches with onscreen text and image prompts for each reading and upload to PosiTector 6000, 200, and UTG gages (*Advanced models only*).

- Ideal for ensuring a consistent measurement pattern for repetitive jobs or when specific measurement locations are required

PosiTector App — iOS/Android

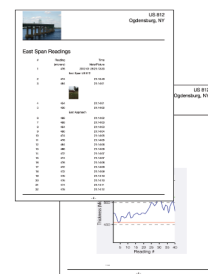
Fully-featured mobile app that connects to the PosiTector SmartLink, PosiTector Advanced gages, and the PosiTest AT-A.

- Auto pairing Bluetooth BLE connection
- Add images and notes to individual readings or batches directly from your device
- Email readings as .csv (comma separated value) files for easy import to Excel and other spreadsheets.
- Synchronize readings with PosiSoft.net—backup and synchronize jobs, batches, and readings to the cloud (see inset below)



Mobile Reporting Solution

- Compile single or multi-batch reports from multiple probes and instrument types
- Add pictures, screen captures, notes, and more
- Email pre-formatted or custom reports from your device instantly



PosiSoft.net

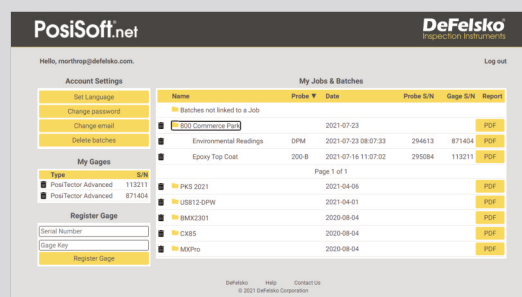
Secure storage of measurement data in the cloud.

compatible with **PosiSoft Desktop** and **PosiTector App**

- Upload measurement data directly from WiFi-connected PosiTector Advanced gages from anywhere in the world—no software required
- Synchronize and share measurement data across multiple computers

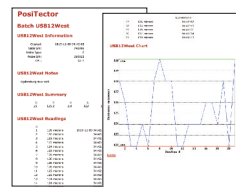
Ideal for...

- Users with multiple computers, instruments, and office locations
- Inspection companies managing data from multiple inspectors
- Login from PosiSoft Desktop to synchronize all measurement data and stored report templates from your account



PosiSoft.net Web Viewer Review measurement data and print simple, pre-formatted PDF reports from any web browser—no software installation required.

PosiSoft USB Drive — Gage based



A simple gage interface to retrieve data in a manner similar to USB flash drives or cameras. No software to install or internet connection required. Measurement data can be printed quickly from a formatted HTML report or exported in .csv format for further analysis in spreadsheets.

PosiTector Developer Resources

•Bluetooth 4.0 •WiFi •Keyboard Mode •USB Serial

PosiTector and PosiTest AT-A instruments can integrate with third-party software, drones, ROVs, PLCs, and robotic devices using several industry-standard communication protocols including: Bluetooth 4.0, WiFi, Keyboard mode, and USB serial.



© DeFelsko Corporation USA 2021. All Rights Reserved. Technical Data subject to change without notice. • Printed in USA • PSoft.v.LW/W2110

DeFelsko
Inspection Instruments

DeFelsko Corporation • 800 Proctor Ave. • Ogdensburg, New York 13669-2205 USA
Toll Free 1-800-448-3835 • Tel: +1-315-393-4450
info@defelsko.vn • www.defelsko.vn

Made in U.S.A.