

#### FEATURES :

- Easy monitoring
- Easy carrying
- Equipment temperature monitoring
- Indoor / Outdoor use etc.
- Resolution : 0.1°C
- MAX / MIN Data Hold

#### DIMENSION & WEIGHT :

##### Dimension

Meter : 48 (L) x 28.6 (W) x 15.5 (H)mm  
(1.88" x 1.12" x 0.61")

Temp. Cable : Ø3.5 x 150cm (DE-20W)

##### Weight :

DE-20                      Approx. 14g

DE-20W / DE-20C    Approx. 26g  
(Installed battery)

#### ACCESSORIES :

- LR44 or SR44 Battery .....1

#### SPECIFICATIONS :

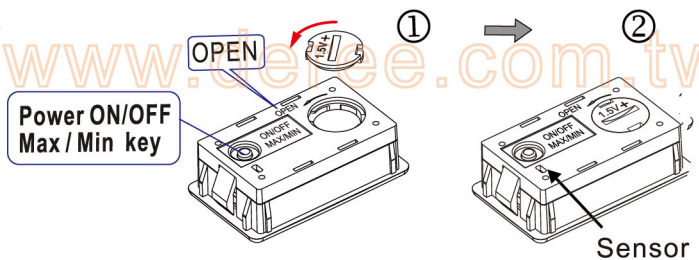
- **LCD display** : Digits LCD Display  
Over Range Indication "HI" or "LO" display
- **Resolution** : 0.1°C
- **Measurement Temp. Range** :  
DE-20W :                      -50°C~100°C  
DE-20 / DE-20C :        -10°C~70°C
- **Accuracy** :  
-50°C~40°C                ± 1.8°C  
>40°C~100°C             ± 3.0°C
- **Sampling Rate** : Every 10 seconds
- **Applicable Ambient Temp. for Meter** : -10°C~70°C
- **Battery Life Time** : Approx. 3 months
- **Battery** : Button Cell LR44 or SR44 x 1 (installed)
- **Low Battery Indication** : display color fades away

#### REMARKS :

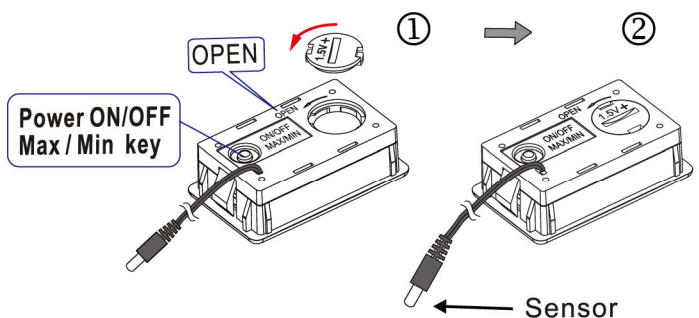
- Only DE-20W is with an extension temp. Probe that can work with the wider range. Don't apply DE-20 to exceed the measurement temp. Range as the case of meter may crash while over the range.
- Optional models with water proof design-DE-30W (with cable) & DE-30 are available in our line.

#### Battery Replacement :

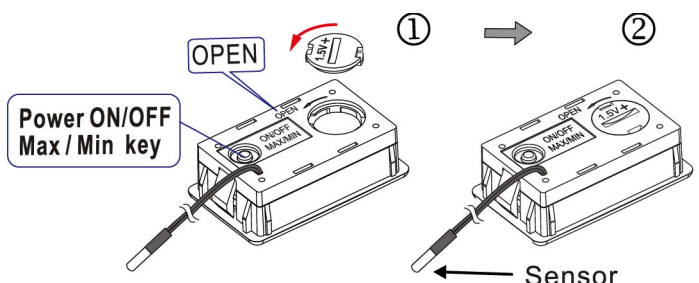
##### DE-20    Sensor embedded in case



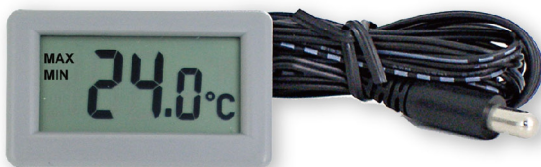
##### DE-20W    Extension wire sensor



##### DE-20C    Extension wire sensor



DE-20



DE-20W



DE-20C